

# Realtime Coach

## What the User needs:

- ❑ Must be on Current support to get the RiTE (Text Entry)
- ❑ Winner's RiTE module enabled.
- ❑ DSL or a Hi-Speed cable connection.
- ❑ A Realtime enabled writer.
- ❑ User name and password from participating entities.

## Enabling Winner's RiTE module.

You will need to get your RiTE (Text Entry) code from Customer service. Please call (800) 966-1221 and speak to a Customer Service Rep. once you have this number follow these instructions:

1. From the Winner main screen click on Tools and then on Register options.
2. Enter your new RiTE code on the optional code line and hit the enter key. This will drop down to the "Entered Options" area.
3. Click on Register.

## Setting up Winner's RiTE module:

1. Click on Translate from Winner main screen.
2. Click on Preferences.
3. Click on Text Entry.
4. Put a Check mark in Activate Text Entry.
5. Click on the Browse button.
6. Up in the "Look In" box click on the down arrow to the right of Sys32.
7. Click on the C:\ drive.
8. Click on Windows.
9. Click on Notepad (some of you will see Notepad.exe)
10. Click on Open.
11. Click on OK.

**© Copyright 1982-2006 by Advanced Translations Technology, Inc.**  
All Rights Reserved.

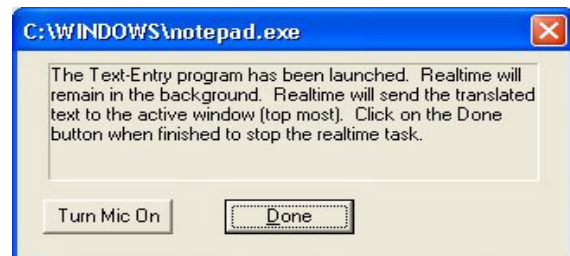
ProCAT Realtime, ProCAT Stylus, ProCAT Flash, RiTE, Winner are trademarks of Advanced Translations Technology, Inc. ProCAT and CaptiVision are registered trademarks of Advanced Translations Technology, Inc. Other brands and product names are trademarks or registered trademarks of their respective holders.

## Setting up Winner's Realtime:

1. Click on Translate.
2. Click on Preferences.
3. Click on Writer; make sure that the writer type is set to None.
4. Make sure that you have your speech input set up.

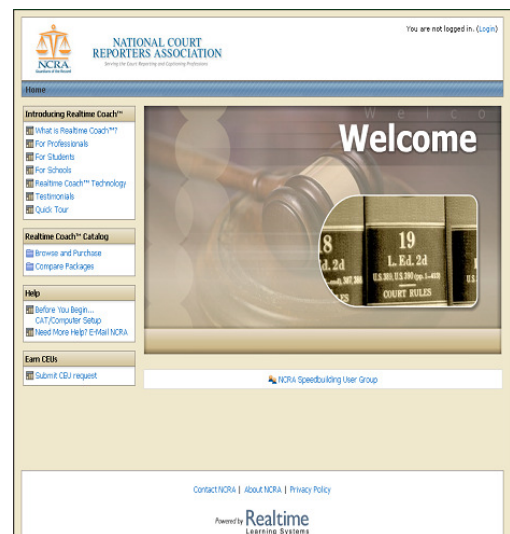
## Connecting Realtime/RiTE:

1. Click on Translate.
2. Click on Connect.
3. The Corrections window will appear, however either close it or ignore it as it will not be used with Realtime Coach.
4. Once NotePad.exe has been launched you will see this screen.
5. Once you have your Realtime Coach in session as outlined below. Then you may click on Turn Mic On.
6. Do not click on Done until you are done with your Coaching session, and are ready to exit Winner's Realtime Translator.



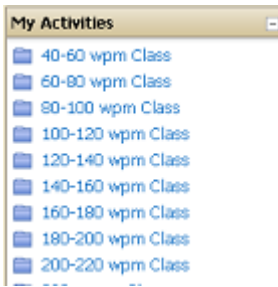
## Connecting to Realtime Coach:

1. Connect to this website  
<http://ncra.learnrealtime.com>
2. In the top right hand corner click on Login.
3. Enter your login and password.

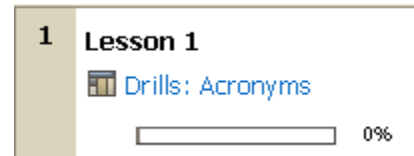


© Copyright 1982-2006 by Advanced Translations Technology, Inc.  
All Rights Reserved.

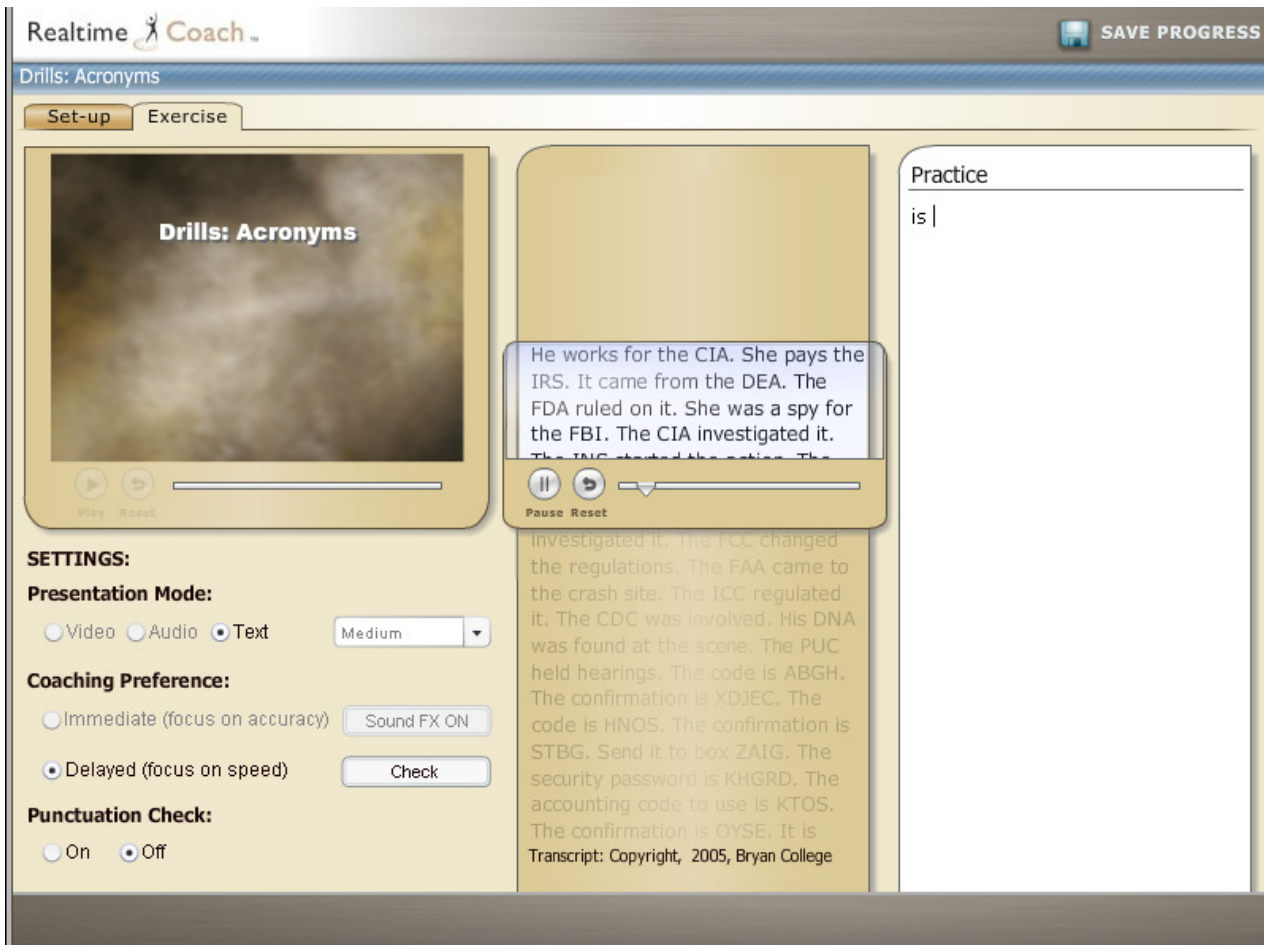
ProCAT Realtime, ProCAT Stylus, ProCAT Flash, RiTE, Winner are trademarks of Advanced Translations Technology, Inc. ProCAT and CaptiVision are registered trademarks of Advanced Translations Technology, Inc. Other brands and product names are trademarks or registered trademarks of their respective holders.



4. Click on Login
5. In the next window you will see My Activities on the left side column.
6. Click on the first activity. 40-60 wpm Class.
7. Select Lesson 1, Acronyms.
8. A new window will



- appear.
9. Click on Exercise at the top left.
  10. Click on Ok for the Reminder.
  11. In this next window below make sure that your cursor is blinking in right hand column under Practice. As you write your English will appear in this window.



© Copyright 1982-2006 by Advanced Translations Technology, Inc.  
All Rights Reserved.

ProCAT Realtime, ProCAT Stylus, ProCAT Flash, RiTE, Winner are trademarks of Advanced Translations Technology, Inc. ProCAT and CaptiVision are registered trademarks of Advanced Translations Technology, Inc. Other brands and product names are trademarks or registered trademarks of their respective holders.

**© Copyright 1982-2006 by Advanced Translations Technology, Inc.**

All Rights Reserved.

ProCAT Realtime, ProCAT Stylus, ProCAT Flash, RiTE, Winner are trademarks of Advanced Translations Technology, Inc. ProCAT and CaptiVision are registered trademarks of Advanced Translations Technology, Inc. Other brands and product names are trademarks or registered trademarks of their respective holders.